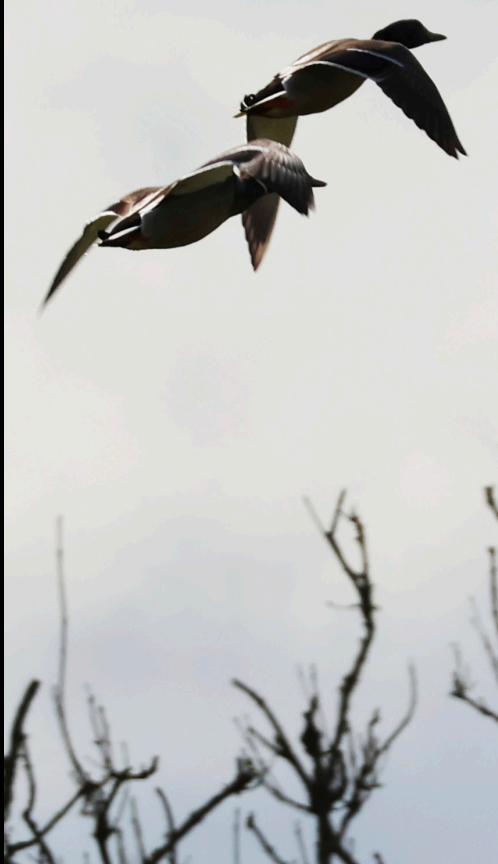




SHOTTESWELL
PARISH COUNCIL
CHAIRMAN'S
REPORT
🐦 2024 🐦



A Year in Review, News & Helpful Tips

On behalf of the Parish Council may I take this opportunity to extend a warm welcome to all of our new residents. We very much hope that you are settling well into village life. My thanks go to all new and existing residents for their continued support in making Shotteswell a nice place to live.

It has been a very busy year in Shotteswell as you will discover over the next few pages.

Library Dates for 2024



The Mobile Library calls at the bus shelter on Tuesday's between 10.30 am and 11.15 pm (45 minutes). Please, note that the library visit times have been changed.

Warwickshire Libraries offer a new eBook and eAudiobook service, BorrowBox, where you can download eBooks and eAudiobooks twenty-four hours a day, seven days a week.

Replacing the RBdigital service, BorrowBox is the only app of its kind in the world with an inbuilt eBook reader and eAudiobook player.

On your smartphone, on your iPad, on your home computer, BorrowBox means the doors to your local library never close. In a constantly expanding selection, you can access eBooks and eAudiobooks around the clock from the very best authors.

Elegant, intuitive and simple to operate and enjoy, BorrowBox can be used online and with all Apple iOS and Google Android devices.

The BorrowBox app is available free through the App Store and Google Play. eBooks and eAudiobooks can be downloaded directly from the app or from the Warwickshire libraries website: <https://www.warwickshire.gov.uk/libraries>

To renew your books, order some more, or enquire about Home Delivery service contact 01926 851031.

Below are the dates when the Mobile Library will be in Shotteswell: (Hawkes Point)

April 2nd & 30th	May 28th	June 25th
July 23rd	August 20th	September 17th
October 15th	November 12th	December 10th
January 14th	February 11th	March 11th

If you are not already registered for library services you can also do this on line <https://www.warwickshire.gov.uk/libraries>

Electric Works

Most of the works connected with the undergrounding had been completed aside from the recovery of the poles. After extensive communications the poles were actually removed. At the time they advised to take a photograph as you soon tend to forget where they were. The tarmac missing from where BT had dug the trench across the path was also reinstated.



Various potholes have been reported and repaired. Our thanks to the County Council.

The parish council also installed this sign in the passing bay on the Mollington Road. it is important to keep this clear for traffic to pass to avoid damage to the verges.



Elections

On the 2nd of May the election for the Warwickshire Police & Crime Commissioner will take place. Please ensure you are registered to vote. Photo Identity will be required. Your candidates are:

[Richard Dickson](#)

Liberal Democrats



[Sarah Feeney](#)

Labour Party



[Philip Seccombe](#)

Conservative and Unionist Party



Local Elections for District Councillors took place last May 2023 and for the first time this area had two Councillors. The successful candidates were Natalie Gist and Nigel Rock both representing the Liberal Democrats.

Cllr Gist is looking after our village and we congratulate them both on their election success.

Cllr Gist can be contacted on:
Natalie.gist@stratford-dc.gov.uk

Mobile: 07745210095



Digital Switchover

As you may already be aware, the UK's telephone network is changing. By the end of 2025, most phone providers will have moved their customers from landlines served by the old analogue Public Switched Telephone Network (PSTN) to new upgraded services which use digital technology. This is commonly referred to as the 'Digital Switchover'.

Why is this happening?

The PSTN or 'copper landline network' is nearing the end of its life. It is becoming increasingly unreliable and more expensive to maintain. The new digital network will provide a more resilient, reliable, sustainable and energy-efficient phone service for decades to come.

It will also provide customers with other benefits including clearer calls and extra features that will include blocking most scam and nuisance calls, offering customers better protection against fraud.

When is this happening?

Around 90% of all Warwickshire residents and businesses currently receive their service from one of the 'big four' fixed landline providers: BT (BT Business & BT Consumer Group), VMO2, Sky and TalkTalk.

VMO2 have already completed the switchover for the vast majority of their Warwickshire customers.

The situation with Sky and Talk Talk is slightly different. As most of their customers do not receive their phone services via the PSTN network that Openreach is switching off, there isn't the same requirement to switch their phone lines over.

As for BT Consumer Group – the largest provider of residential fixed line phone services in the UK, they will start the migration of customers to their Digital Voice network in Warwickshire areas in February 2024.

They have a number of drop-in sessions planned across the region.

Each of the phone service providers has extensive plans in place to notify affected customers well in advance of their switchover date. This includes providing them with easy to understand step-by-step instructions of what they will need to do on the day to ensure the transition is as smooth as possible.

Drawbacks and further advice:

One of the main drawbacks of the new digital network is that differences between the two technologies means that there is a risk that devices that currently rely on the old network – such as telecare devices - will not necessarily work when switched over to the digital one.

All telecoms providers have plans in place to provide extra support to their more vulnerable customers and all have now signed up to a charter agreeing that they will not migrate vulnerable customers over to the new digital network until they are sure that a compatible telecare solution is in place.

However, if you think that you or someone you know may be affected by this, we would advise that you to get in touch with the phone service provider to ensure they are aware of the situation.

Another drawback is that your new digital landline may not work if there is a power cut. Openreach are working with the government and the power networks to help make the digital phone network more resilient in the event of any power outages.

Those with access to a mobile phone are advised to ensure these are sufficiently charged so that in the event of a blackout, calls – including those to emergency services - can still be made.

Battery back-up solutions can also be purchased and OFCOM has stated that if an 'at-risk' customer does not have any other means available, their telecoms provider must offer a solution to allow calls to be made to the emergency services. Your phone service provider will be able to provide more information on this.

Finally, it is worth noting that BT Business are following a totally separate migration rollout plan for their customers compared to BT Consumer Group. If you are a BT Business customer, we suggest you contact them to discuss the migration of your phone services to the digital network.



Dassett Primary School

We discovered that plans were afoot to reduce the school number intake to the local primary school from 30 down to 15 (PAN). Given that we have had previous issues from this village of students not being able to get a place, we naturally registered our concerns. Of particular concern was the new development of Compton Locks, which will bring one hundred further houses to the catchment area. As a result of our intervention and alerting neighbouring villages to the possibility, the decision to reduce the number has been deferred for this academic year 2025/26 but they do plan to apply to reduce the numbers again for 2026/27 if there has not been any significant changes. These proposals are largely being driven by staffing costs and that classes can be mixed age groups. Cllr Ingram attended the meeting at the school and was reassured to discover that the PAN could be reviewed annually. The further the village is away as the crow flies decides the placement, so this particularly affects Shotteswell. It also has to be borne in mind that the Dassett School has the only school transport from the village to a catchment primary school. It was felt that the Compton Locks

development impact would be better able to be assessed next year and the Parish Council will continue to monitor the situation. Our District Cllr and the local MP Sir Jeremy Wright expressed their concerns over the proposals.

Current position & Next steps

- Autumn 2023 – Governors submitted proposal to reduce PAN from 30 to 15 for reception 2025/26 intake
- December 2023 – January 2024 - WCC Consultation
 - 10 negative responses received – no detail provided
- Feb 2024 – Governors withdraw proposal for 2025/26
- March 2024 – Public engagement meetings

Future

- Autumn 2024 Governors will review the latest information, but are minded to continue with the plan to reduce PAN from 30 to 15 for Reception 2026/27

What is driving changing the PAN

- The Governors are responsible
 - Good financial management of the school
 - ensuring school performance and quality of education
- WCC forecast is for 30 reception children across The Dasset and Temple Herdwyke primary schools in future years
 - The forecast includes consideration of new housing
- A school receives funding per pupil, not per class
 - A reception class of 17-18 could lead to small expensive classes in KS1, and large classes of 30+ in KS2.
 - To plan and deliver the curriculum effectively requires consistency in class structure, and the R + Y1/2, Y3/4, Y5/6 is a sustainable structure

The PAN can always be changed in future if demand significantly increases

Upper Lighthorne Surgery

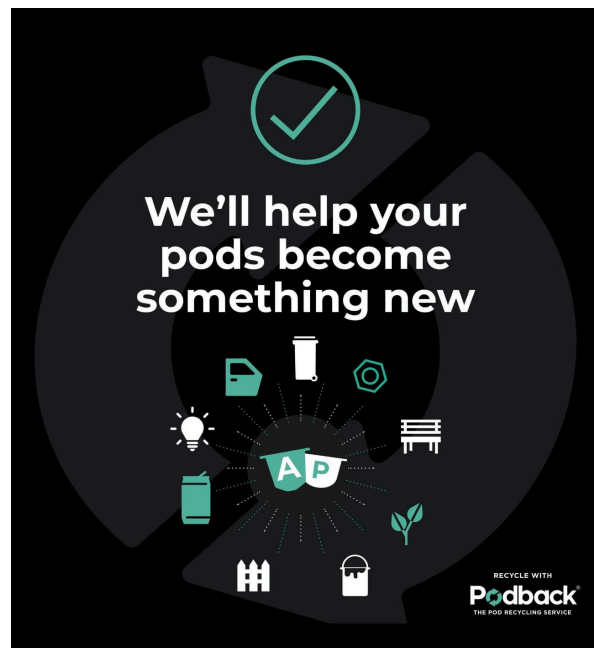
The Parish Council is still involved and engaged with the procurement procedure of the new surgery at Upper Lighthorne. Along with many of the other satellite villages that we encouraged to come on board. You may wonder how this affects Shotteswell.

Aside from bringing on further health care facilities in the area, it will also, once built, take the pressure off to some extent of the other practices that residents may already be attending such as Fenny Compton and Kineton. A contract to run the new surgery has been offered to a satellite surgery, following ratification this will be announced on the 3rd of May.

Coffee Pod Recycling

Podback is a Nationwide, not for profit, coffee pod recycling service created by the biggest names in coffee pod systems, such as Nespresso, Nescafé Dolce Gusto and Tassimo.

You need to sign up to the scheme and then they will provide you with the necessary bags
www.podback.org



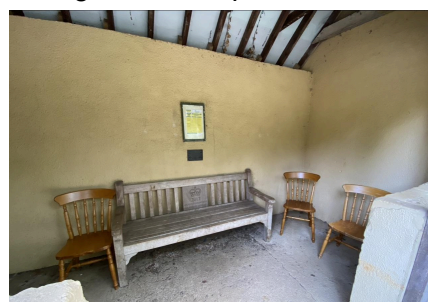
Additionally both Morrisons and Aldi offer in store facilities to recycle the pods too.

Just a reminder to please keep your old batteries separate from your rubbish. These batteries if not kept separate can cause fires in the refuse trucks.

Fly Tipping

Sadly this continues and is very prevalent on the Mollington Road and the B4100 lay-by. This year we have even found items dumped in the bus shelter.

If you spot any rubbish please let us know as soon as practicable so that we can arrange for its disposal.



New Road

Progress to acquire the land at New Road has been very slow, however, we are in the final stages and hope to get the legal work completed soon.

Last year there was an attempt to clad some of the properties with external cladding in consultation with the residents the Parish Council spent a considerable amount of time researching and negotiating with Orbit Housing and it was decided that the residents did not want the cladding to take place. Given some of the negative feedback from some of the residents at Tysoe who had the work undertaken we are pleased this decision was reached.



Snuff Lane

Following all the upheaval of the previous year of extensive works in the lane, Snuff Lane was finally resurfaced.



The lane was completed once the broken flower tub was replaced by the Electricity Company.



Voneus

Continued to be present in the village in various areas, we were somewhat dismayed that areas that had recently been resurfaced were disturbed but these were rectified.

Negotiations continued regarding using the poles in the New Road area rather than erecting new ones. After extensive negotiations with the Electricity Board and senior management at Voneus, a way leave agreement is currently proceeding which will avoid having to erect a new pole. It appears that some of the residents who have signed up with Voneus are delighted with the fast speeds that they are enjoying. Other areas where poles were proposed have been reorganised to still facilitate the installation without the need for further poles. Voneus are still working in the village.



Drainage works were undertaken along Church Lane and we are grateful to Warwickshire County Council for undertaking these works. This has alleviated flooding in this area.



Salt Bins

Thankfully we haven't seen much bad weather this year, but always being prepared for such eventualities the broken bin on the Bakehouse/Middle Lane junction has been replaced. We are awaiting the County Council to reposition the bin when time allows as it is a bit incongruous in its current position.



A new salt bin was also provided on the Mollington Road on the bend approaching the Riding School. This area is notoriously precarious when we have ice on the roads.

We also requested that the SLOW sign on the Mollington Road was repainted.



Fallen Trees

Sadly we had to deal with some fallen trees over the winter months. Some were dealt with locally and others were promptly dealt with by the local authority at our request.



Finance

The Parish Council has retained the previous years precept and as you will see reflected in your Council Tax demands, we are one of the lowest in the Stratford District Area.

If you receive any form of discount or reduction on your bill, you must notify the Council immediately of any change in your circumstances that may affect it.

Council Tax is collected by Stratford-on-Avon District Council on behalf of the following:

		% Change
Warwickshire County Council	£1,786.40	2.9 %
Warwickshire County Council Adult Social Care	£234.63	1.0 %
The Police and Crime Commissioner	£338.20	5.3 %
Stratford-on-Avon District Council	£194.48	3.2 %
Parish of Shotteswell	£63.91	0.0 %
Total Charge	£2,617.62	4.0 %

The Council Tax attributable to Warwickshire County Council includes a precept to fund adult social care. For adult social care authorities, Council Tax bills show two percentage changes: one for the part of the overall change attributable to the adult social care precept, and one for the part attributable to general expenditure. Detailed financial information is on our website. <https://www.stratford.gov.uk/council-tax/council-tax-charges.cfm>. If you need a printed copy please call 01789 260990.

Go green and view your account online. You can also choose to have your bills electronically. Please visit www.stratford.gov.uk/mydistrict/ and register for a My District account.

Reason for Bill: Annual Billing

019226

If you receive any form of discount or reduction on your bill, you must notify the Council immediately of any change in your circumstances that may affect it.

Council Tax is collected by Stratford-on-Avon District Council on behalf of the following:

		% Change
Warwickshire County Council	£1,846.96	3.0 %
Warwickshire County Council Adult Social Care	£275.05	2.0 %
The Police and Crime Commissioner	£354.09	4.7 %
Stratford-on-Avon District Council	£200.59	3.1 %
Parish of Shotteswell	£63.01	-1.4 %
Total Charge	£2,739.70	4.7 %

The Council Tax attributable to Warwickshire County Council includes a precept to fund adult social care. For adult social care authorities, Council Tax bills show two percentage changes: one for the part of the overall change attributable to the adult social care precept, and one for the part attributable to general expenditure. Detailed financial information is on our website. <https://www.stratford.gov.uk/council-tax/council-tax-charges.cfm>. If you need a printed copy please call 01789 260990.

Go green and view your account online. You can also choose to have your bills electronically. Please visit www.stratford.gov.uk/mydistrict/ and register for a My District account.

Reason for Bill: Annual Billing

019674

Shotteswell Parish Council Accounts 2022/23

Receipts		Payments	
Interest	4.17	Salt bins/sign	894.58
VAT Refund	561.85	Poppy Wreath	50.00
Insurance Claim	705.67	Misc	142.00
		Hire of Village Hall	50.00
		Verge Maintenance/Trees	264.60
		Playing Field	400.00
		Plants & Bulbs	370.11
		Insurance	457.44
		Printing & Stationery	280.48
		Grass Mowing	1,640.00
		RoSPA	121.80
		Defib Pads	158.34
		Bank Charges	119.00

Total	1,271.69	Total	4,948.35
--------------	-----------------	--------------	-----------------

Reconciliation	
Balance B/F	5,393.21
Precept	6,500.00
Receipts	1,271.69
Total Receipts	13,164.90
Total Payments	4,948.35
To C/F 2023/24	8,216.55

By way of example Warmington £10,361, Avon Dassett £15,610, Farnborough £17,806, Shotteswell £6,500.

Poppy Wreath

This years door to door collection raised £166.96
Thank you for all your donations which are recorded against the parish.

The Act of Remembrance is held each year at St Laurence Church, on the Sunday closest to the 11th of November it is a poignant ceremony. It was in 1983 that the wreath started to be laid as an

annual event in Shotteswell. The late Mrs Louisa Gilbert purchased a wreath to honour her late husband whose name appears on the war memorial in the church porch. Mr Gilbert was killed in action on the 17th of September 1939, just 14 days into the war leaving four young children without their father. Sadly, Mrs Gilbert died on the 30th of October only a few weeks prior to the ceremony and never got to see the wreath laid. Thereafter, for a good number of years the wreath was carefully pressed, starched and reused. A new Vicar arrived and decided that a new wreath needed to be purchased every year. The wreath hung in the porch until it was replaced each year by a new one. Poppy wreaths are meant to stay until they fade so given the memorial is in the church porch and protected then it is quite significant that this does not fade and pays homage to the fallen, which is comforting to those who have lost family members both from Shotteswell and further afield. The Parish Council, therefore, on behalf of the village pays for the new wreath each year.



The old wreaths are then repurposed to decorate the interior of the church for the service.

Over the past few years the Royal British Legion have made commemorative wreaths recording some of the history behind significant events, we have made a point in trying to recognise this when we select the annual wreath.

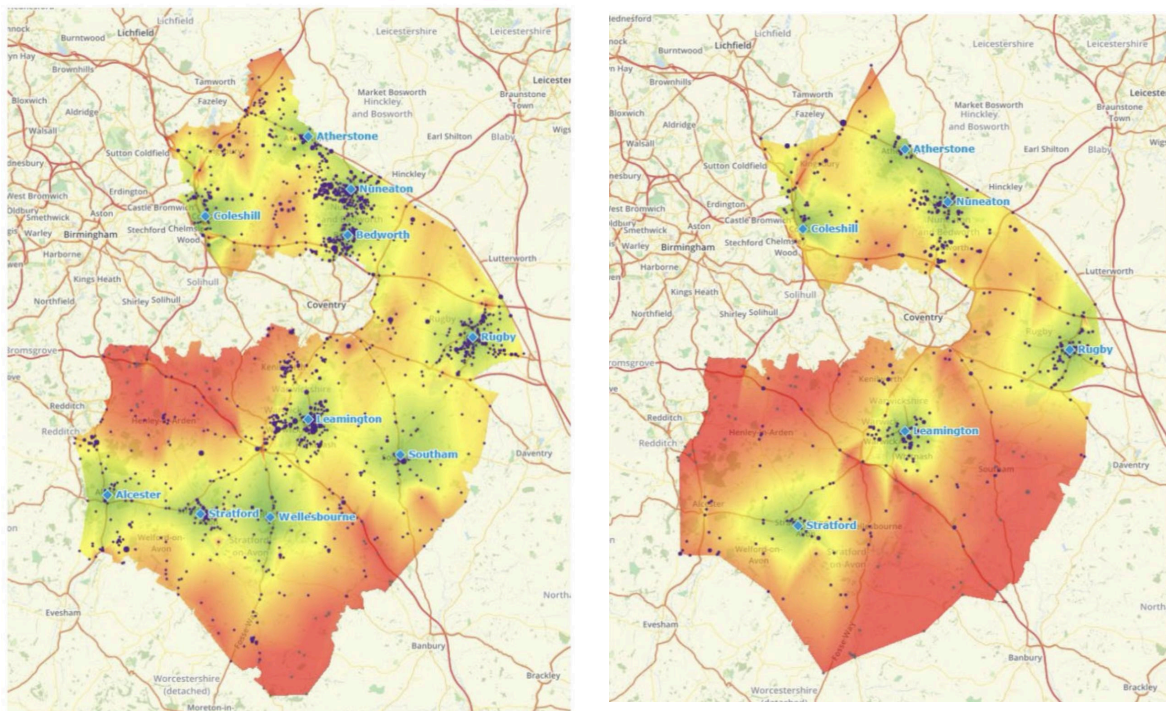


Fire & Rescue Consultation

Warwickshire County Council recently began consulting on the proposals to restructure again the fire service in the county, heralded as “Resourcing to Risk”. Under this proposal many of the local retained or On Call stations will be relegated to what is termed a surge station. Under these proposals Fenny Compton and Gaydon would become such stations, so effectively no longer providing an emergency response. Southam and Wellesbourne would no longer be manned by retained staff but would instead be operated by whole time firefighters. This Whole time service would only be operational between the hours of 8am until 10pm at night, subject to the fire service finding personnel who would operate these evening shifts.

After the hours of 10pm and until 8am the cover for South Warwickshire would come from either Stratford or Leamington Spa.

Below are two heat maps which show the perceived risk and time responses, all the areas in red show a response time in excess of twenty minutes. The first map is daytime cover and the second from 10pm until 8am.



The rationale behind this is to give a speedier response time (10 minutes) in the north of the county where there appears to be a greater risk. However, this appears to leave the south of the county very vulnerable. You may be thinking that we should be okay because Banbury would step up to the plate. Banbury is in a different county and would always give priority to their own county first and therefore, could not be relied upon to come to our aid.

Surge stations would only be called upon in the event of a major incident, the response of these teams (assuming they can staff them) would be up to two hours.

The other aspect of this if the proposals go ahead is the likelihood that many of the retained staff would be either made redundant or leave as the shift system is completely different to the on call system (whereby you only go out if there is an incident). This then lends to the idea if the Fire Chief has gotten it wrong what is Plan B? On Call firefighters are trained to

the same standard as Whole Time Firefighters. Local firefighters know their specific areas which obviously is invaluable in an emergency scenario.

We have made representations to the Fire Minister, the Inspectorate and our local MP Sir Jeremy Wright and our local County Councillor. We have sent a robust response to these proposals (10 pages) which owing to space we cannot replicate here.

Both myself, Cllr Ingram and Cllr Burgess attended the meeting held in Southam in February and made representations. Cllr Ingram continues to monitor this ongoing consultation closely on our behalf and should you require any further information would be happy to discuss this with you.

The County Council will debate these responses to the consultation and make a report to cabinet which is then voted upon by local county councillors including our County Councillor, Chris Mills on the 23rd of July.

Sewerage Works

Although this hasn't been arranged by the Parish Council, we thought people may be interested in the extensive works being undertaken at the sewerage plant. The system is being upgraded to cope with better flows and this has been the reason for the ash tree being removed as it was disturbing the pipe work. There will still be a need for the tanker to call even with the upgrade but readers might be interested to know the sludge removed is then taken to Banbury and added to the anaerobic digester which generates electricity.



Poultry

From the 1st of October 2024, all poultry flocks of any size need to be registered. Currently only those keeping flocks of over fifty were required to register but this will change in the autumn so that all kept birds are registered. The new measures are to keep abreast of outbreaks of avian flu and Newcastle disease, the Government will also advise on biosecurity rules to help protect the health of flocks. People are encouraged to register their birds before the deadline. Poultry keepers will be required to review their poultry register entry annually to ensure their details are up to date.

The flocks include chickens, turkeys, aviary birds, birds of prey, cassowaries, ducks, emus, geese, guinea fowls, kiwis, ostriches, partridges, pheasants, pigeons, psittacines (for example parrots, budgies and cockatiels), quails and rheas.



Cats

All kittens must be microchipped before they reach 20 weeks old and all existing cats must be microchipped by the 10th of June, when it becomes compulsory to do so in England.

Refuse Collections

Unfortunately, it is no longer the practice to send out printed editions of the collections. We are ever mindful that there are residents without the ability to download the app or may not want to. Therefore, we have produced the following guide which includes the changes over the Christmas period.

Food Waste is collected weekly in the green caddy's so is not included in the charts

Month	Blue Recycling Garden Waste	Grey Household non-recycling
May	8th, 22nd	8th, 29th
June	5th, 19th	19th
July	3rd, 17th, 31st	10th, 31st
August	14th, 28th	21st
September	11th, 25th	11th
October	9th, 23rd	2nd, 23rd
November	6th, 20th	13th
December	4th, 18th	4th, 27th***
January	3rd***15th, 29th	15th
February	12th, 26th	5th, 26th
March	12th, 26th	19th
April	9th, 23rd	9th, 30th
May	7th, 21st	21st
June	4th, 18th	11th

Christmas Changes: Non recycling due to be collected on 25th December will be collected on Friday 27th & food Caddy's.

Recycling due to be collected on 1st January will be collected Friday 3rd of January along with food caddy's.

Green bin collections will be suspended over the Christmas Period (for Shotteswell last green bin collection will be 18th of December) and resume on 15th January 2025.

Anyone who has a real Christmas tree and would like them repurposed before the 15th, please contact Cllr Pearson.

Please, continue to ensure that all batteries are not put into the bin but kept separately and left on top of the bins on recycling weeks.

Bus

There has recently been a few issues with the Thursday bus not coming down the village, this has again been raised with the County Council and should now be remedied. If you find this not to be the case please, let the Clerk know.

Although we can not get the bus service improved to the village itself we have had somewhat of a breakthrough after negotiations with the county. As such keen eyed residents may have noticed that there is now a bus stop notice on the Second Turn of the B4100. From this point you should be able to hail a passing bus. We are trying to secure a timetable of when these buses pass. We anticipate some teething errors to begin with, but hopefully with use these will pass. This is to try and help those without their own mode of transport to have a way of getting into town on other days than Thursdays.



Playing Field

This year marks the twentieth year anniversary of the Parish Council acquiring the playing field for the benefit of the village children.

Sadly, the tree house has come to the end of its natural life and will shortly be demolished when weather conditions allow.

Over the winter we arranged for the hedge to be cut back and this has generally improved the look of the field. The field was again used by permission of the parish council for the village fete which raises money for the Church and the Village Hall.

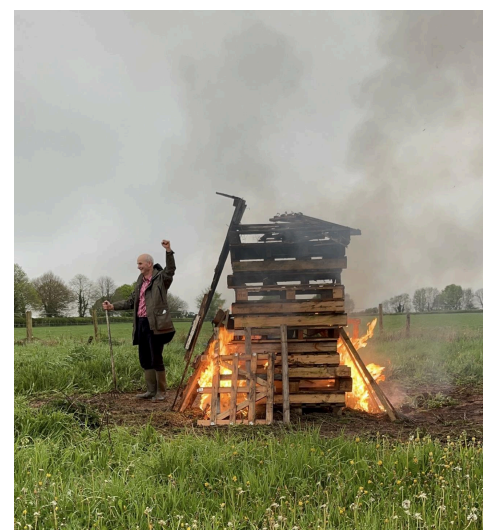


Sadly, we have been informed that dogs are again being taken into the field, which causes issues not only for users of the field but also the contractor. We, therefore, respectfully remind residents to please be considerate and not take dogs into the field as per the sign on the main gate.

King's Coronation

Another enjoyable event was arranged and very well supported by the community for which we are extremely grateful. It was lovely to see the village pitching in again and marking this special occasion. We held a beacon lighting session in the playing field, and we gave Keith Harper the honour of lighting the fire for us this time.

We then gathered by kind permission of Catherine and Mike from Laurel farm at their barn for the main event. It was thankfully a lovely warm day so partygoers were able to sit in the courtyard, out in the area in the field and in the barn. Our grateful thanks for all the contributions towards the food, drink and partyware etc.

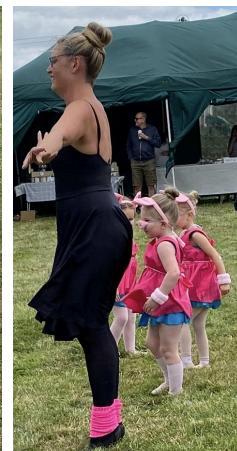






Shotteswell Fete

A date for your diaries The fete will take place in the Children's Playing Field on Saturday 6th of July 2024



Your Parish Councillors Are:

Les Faulkner (Chairman) tel 01295 730576

Val Ingram (Clerk) 01295 730203

Michael Pearson (Vice)

Jan Burgess

Ben Zammett

Please visit www.shotteswellvillage.co.uk for further information.

